

Customer Sample ID: Lifter-Trim
 Laboratory Number: 19J0128-03



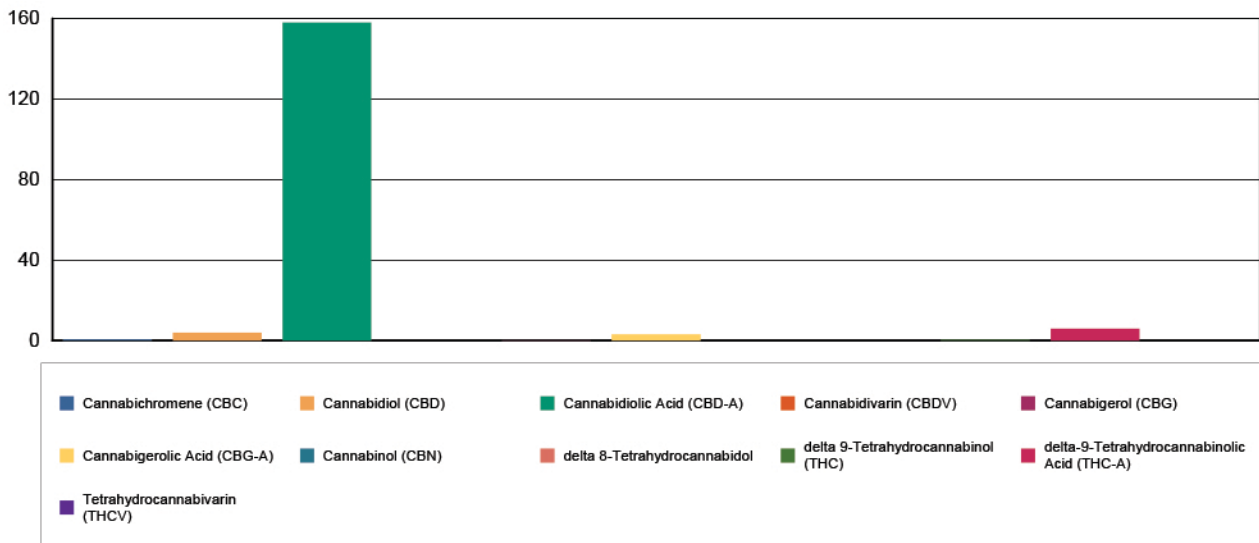
Cannabinoid Profile

Extraction Technician: DF
 Analytical Chemist: MF

Extraction Date(s)	Analysis Date(s)
10/7/2019	10/7/2019

Cannabinoids (HPLC)		Results	
	LOD (mg/g)	%	mg/g
Cannabidiol (CBD)	<0.090		
Cannabidiolic Acid (CBD-A)		15.80	158
Cannabigerolic Acid (CBG-A)		0.32	3.2
Cannabigerol (CBG)		0.03	0.3
Cannabidiol (CBD)		0.41	4.1
Tetrahydrocannabivarin (THCV)	<0.090		
Cannabinol (CBN)	<0.090		
delta 9-Tetrahydrocannabinol (THC)		0.06	0.6
delta 8-Tetrahydrocannabidol	<0.090		
Cannabichromene (CBC)		0.08	0.8
delta-9-Tetrahydrocannabinolic Acid (THC-A)		0.60	6
Cannabinoids Total		%	mg/g
Max Active THC		0.59	5.82
Max Active CBD		14.31	143.07
T.Active Cannabinoids		0.57	5.71
Total Cannabinoids		17.30	173.00
Ratios			
24.74:1 CBD to THC		0.04:1 THC to CBD	

Cannabinoid (mg/g)



Altitude Consulting, LLC utilizes NIST traceable Reference Standards and Certified Reference Material to calibrate analytical instruments along with proven analytical methods. The methods are applied in the most ethical manner following good laboratory practice guidelines. The results of this report are based solely on the sample submitted and cannot be reproduced.