

Customer Sample ID: Sour Space Candy -Trim
 Laboratory Number: 19J0128-04



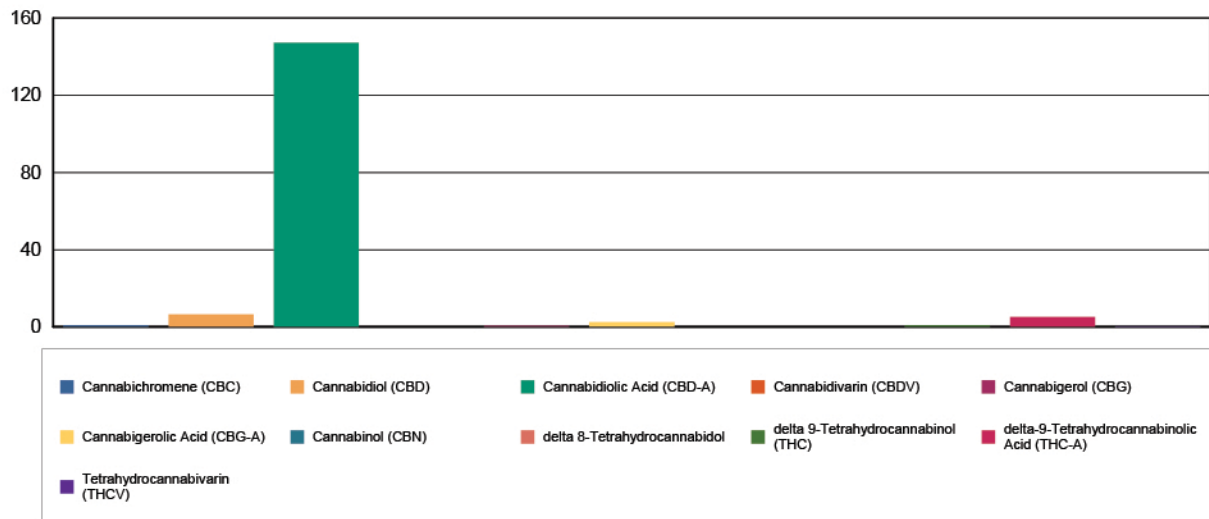
Cannabinoid Profile

Extraction Technician: DF
 Analytical Chemist: MF

Extraction Date(s)	Analysis Date(s)
10/7/2019	10/7/2019

Cannabinoids (HPLC)		Results	
	LOD (mg/g)	%	mg/g
Cannabidivarin (CBDV)	<0.10		
Cannabidiolic Acid (CBD-A)		14.73	147.3
Cannabigerolic Acid (CBG-A)		0.26	2.6
Cannabigerol (CBG)		0.08	0.8
Cannabidiol (CBD)		0.65	6.5
Tetrahydrocannabivarin (THCV)		0.04	0.4
Cannabinol (CBN)	<0.10		
delta 9-Tetrahydrocannabinol (THC)		0.09	0.9
delta 8-Tetrahydrocannabidol	<0.10		
Cannabichromene (CBC)		0.09	0.9
delta-9-Tetrahydrocannabinolic Acid (THC-A)		0.52	5.2
Cannabinoids Total		%	mg/g
Max Active THC		0.55	5.41
Max Active CBD		13.55	135.53
T.Active Cannabinoids		0.91	9.09
Total Cannabinoids		16.50	165.00
Ratios			
25.43:1 CBD to THC		0.04:1 THC to CBD	

Cannabinoid (mg/g)



Altitude Consulting, LLC utilizes NIST traceable Reference Standards and Certified Reference Material to calibrate analytical instruments along with proven analytical methods . The methods are applied in the most ethical manner following good laboratory practice guidelines. The results of this report are based solely on the sample submitted and cannot be reproduced.